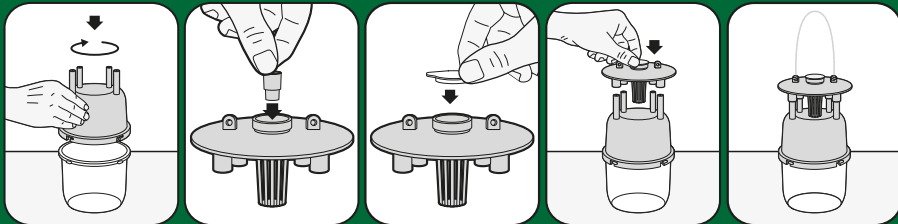


HOW TO USE



1. Assemble the trap by clipping and turning the clear base to engage the lugs with the upper green funnel. If desired add 1-2 cm of water into the base of the trap to drown captured moths.
2. Remove the lure (which has the pheromone absorbed into it) from the sachet and place within the basket inside the lid of the trap, sealing with the cap afterwards. Do not pierce or open the lure as the pheromone is released gradually from the surface of the lure.
3. Securely push the lid onto the 4 locating lugs on the funnel of the trap.
4. Use the string provided to hang the assembled trap from a suitable branch or place in the area of the box plants. Keep the second lure in its original packaging stored in a cool, dry place.
5. Inspect the trap at least twice a week for signs of moth activity. If moths are present carefully check the box plants, removing any affected branches or spraying to control infestations.
6. Replace the lure after 6 weeks, emptying and cleaning trap of any dead insects or debris.

At the end of the season take down and clean the trap. Store till the following season when the trap can be re-used with fresh lures that are readily available as low cost refill packs.

HOW IT WORKS

Vitax Box Tree Moth Trap consists of a trap with 2 pheromone lures to attract the male box tree moths, monitoring and helping control this serious pest. The lure attracts male moths which then drop through the funnel into the trap. Minor infestations may be adequately controlled by preventing males from mating with female moths. For severe infestations the monitoring trap provides warning of infestation allowing timely control measures to be introduced.

USAGE PERIOD

The box tree moth is generally active from mid-April to October, peaking between mid-July to the end of September. The moth has a wingspan of 38-40mm with white wings with a broad bronze brown border. Occasionally the wings can be almost entirely brown with a couple of white spots on the forewing. There can be up to 3 generations of caterpillars during the season.



HOW TO INSTALL

At the beginning of the season (mid to late April) before the first flight, hang or place the trap, ideally at a height of 1.5m (5 ft), close to the box plants to attract and trap any male moths in the area and monitor the potential level of infestation. Use 1 trap for every 200m² of box plants.

NOTE

Before hanging up the Box Tree Moth Trap check your box plants to ensure there is no infestation already present. Look for signs of infestation such as gelatinous clumps of 10-20 eggs on the undersides of leaves or green patterned caterpillars with a black head and white and yellow stripes plus a row of black spots. If an infestation has already occurred, cut out the infested branches and remove the pests by hand or spray with a suitable bug killer.

Contents: 1 reusable trap and 2 lures.