



— TRUSTED BY GENERATIONS OF GARDENERS —



- Fertilisers • Specialist Feeds • Organics • Lawn Care • Growing Media
- Animal Repellents • Weedkillers • Pest Control

# SPOTLIGHT ON

## NIPPON

For over 50 years customers have recognised Nippon as the first choice for pest control.

The brand leading, comprehensive range includes crawling and insect products through to rodent control.

Customers trust Nippon to efficiently and effectively deal with pest problems.

See page 36-41 to view the full range.



## SBK

SBK is a firm favourite amongst gardeners looking to kill tough, woody weeds without the use of glyphosate. Available only from Vitax, SBK is a systemic weedkiller which kills right down to the root.

Its unique formulation is offered as a concentrate or ready-to-use spray alongside a new addition to the range - SBK Tree Stump Killer.

See page 30 for more information.



## SLUG GONE WOOL PELLETS

Vitax Slug Gone - the original wool pellet - continues to go from strength-to-strength.

The wool pellets continue to be a hit with gardeners looking for a safe, organic way to protect their plants from attack.

Through continued, major investment in manufacturing capacity, Slug Gone will stock availability continues to expand at pace.

See page 31 for more information.



## NEW PRODUCTS



Innovation is at the heart of Vitax and we strive to bring to market new and unique products that help gardeners achieve outstanding results.

**New this year**  
Liquid Acer Feed - page 10  
Herb Feed - page 11  
Liquid Olive Feed - page 11  
Organic All Purpose Plant Food - page 4

## Index

Fertilisers	4-15	Weed Control	30
House plant Care	16-17	Slug & Snail Control	31
Water Retaining Crystals	17	Pest Control	32-33
Composts	18-19	Exterior Care	33
Soil & Compost Additives	20-21	Animal Repellents and Training Aids	34-35
Grits & Sands	22	Nippon Pest Control	36-41
Enthusiast Range	23-27	Displays and Point of Sale	42
Lawn Care	28-29		



EMS 610138



PM 610137

# Fertilisers

## Vitax Q4 Fertiliser

The premier fertiliser for fruit, vegetables, flowers and roses.

- Outstanding all-purpose fertiliser
- The favourite fertiliser of experienced gardeners
- Contains all the vital plant foods and trace elements essential for vigorous growth, abundant flowering and ripening of fruit
- Apply throughout the growing season



Pack size	Packs in outer	Product code
60g powder (sachet)	2 x 12 on clip strip	6QF60
60g powder (sachet)	1 x 50 in box	6QF61
0.9kg pelleted (box)	6	6QF96
0.9kg pelleted (pouch)	6	6QF901
2.5kg pelleted (box)	3	6QF253
4.5kg pelleted (tub)	2	6QF45
10kg powder (tub)	1	6QF10
20kg powder (bag)	1	6QF20



## Q4 Rootmore

Mycorrhizal fungi, beneficial organisms and biostimulants in powder form.

- Stimulates intensive root growth
- Creates stronger, more resilient plants
- Reduces the need for additional fertiliser
- Enhances roses, trees, shrubs and edible plants
- Add to the bottom of the planting hole so roots are in close contact



Pack size	Packs in outer	Product code
60g (sachet)	24	6QFR60
250g (pouch)	6	6QFR256
2.5kg (tub)	2	6QFR25



## Q4 Rootmore Water In

Soluble mycorrhizal fungi to boost root growth.

- Also contains beneficial bacteria, seaweed and biostimulants
- Helps create a healthy bioactive root zone
- Encourages vigorous and robust plant growth
- Suitable for roses, trees, shrubs and most edible plants
- All the benefits of powdered mycorrhizal fungi but can also be watered in after planting

Pack size	Packs in outer	Product code
5 x 10g sachets	12	6QFRS10



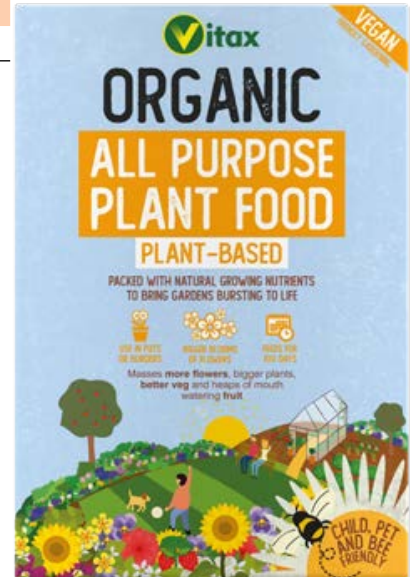
# Fertilisers

## Vitax Organic All Purpose Plant Food

A new, unique formula utilising both organic and plant-based nutrients to create a rich, highly effective feed set to bring all types of gardens bursting to life.

- A balanced feed, ideal for all types of gardens from window boxes to vegetable patches
- Effective - Rich in naturally slow release nutrients for great results in all plants
- Suitable for vegan friendly gardening

Pack size	Packs in outer	Product code
0.9kg	6	6APF1



## 6x Pelleted Poultry Manure

100% natural pelleted fertiliser.

- The ideal feed for flowers, lawns, vegetables, trees and roses
- Highly concentrated – use handfuls not barrow loads
- Weed and bug-free easy to use pellets
- With trace elements to feed the soil

Pack size	Packs in outer	Product code
7kg (tub)	1	76XPCF7
20kg (bag)	1	76XPCF20



## 6x Natural Plant Feed

100% natural fibrous fertiliser.

- Up to six times richer than farmyard manure
- The ideal feed for flowers, lawns, vegetables, trees and roses
- Provides humus, nutrients and trace elements with a neutral pH
- Conditions the soil while it feeds the plant
- One application continues working right through the season

Pack size	Packs in outer	Product code
15kg (bag)	1	76XFF15



## Growmore

Popular general purpose fertiliser for use all around the garden.

- Contains a balanced blend of three major plant foods
- Promotes heavy crops of fruit and vegetables, as well as beautiful flowers
- Also ideal as a pre-seeding fertiliser for use before laying turf or sowing grass seed

Contains single superphosphate. Causes serious eye irritation.

Pack size	Packs in outer	Product code
1.25kg	6	6GR126
2.5kg	3	6GR253
5kg (tub)	2	6GR5
10kg (tub)	1	6GR10
20kg	1	6GR20



1.25kg



2.5kg



5kg



10kg



20kg

## Bonemeal

Slow release fertiliser produced from bonemeal.

- Encourages healthy root development
- Rich in phosphates and nitrogen
- Releases nutrients slowly over an extended period
- Ideal for bulbs, herbaceous plants, shrubs, roses, fruit trees and strawberries

Pack size	Packs in outer	Product code
1.25kg	6	6BM126
2.5kg	3	6BM253
5kg (tub)	2	6BM5
10kg (tub)	1	6BM10
20kg	1	6BM20



1.25kg



2.5kg



5kg



10kg



20kg

## Blood Fish & Bone

Traditional, organic-based, general purpose fertiliser.

- Encourages strong growth and rich green foliage
- Promotes healthy root development
- Improves ripening of fruit & vegetables
- Apply throughout the growing season

Pack size	Packs in outer	Product code
1.25kg	6	6FB126
2.5kg	3	6FB253
5kg (tub)	2	6FB5
10kg (tub)	1	6FB10
20kg	1	6FB20



1.25kg



2.5kg



5kg



10kg



20kg

# Fertilisers

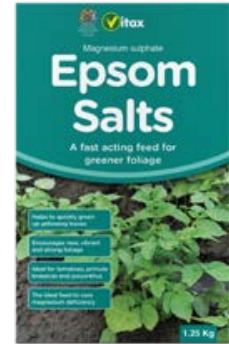
## Epsom Salts

**Rapid cure for magnesium deficiency.**

- Particularly beneficial for tomatoes and house plants
- Use as a base dressing or liquid feed
- Apply as necessary during the growing season



Pack size	Packs in outer	Product code
1.25kg	6	6ES126



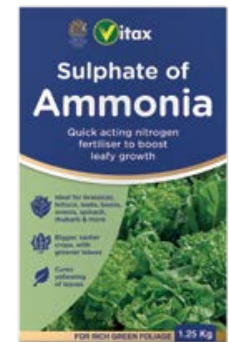
## Sulphate of Ammonia

**Fast acting nitrogen fertiliser to encourage leafy growth.**

- Particularly beneficial for brassicas, lettuce, spinach, rhubarb, leeks and onions
- Provides a rapid boost for flowering plants, shrubs and fruit
- Also greens up a tired lawn



Pack size	Packs in outer	Product code
1.25kg	6	6SA126



## Sulphate of Iron

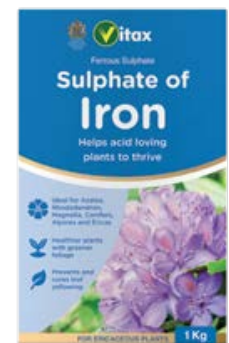
**Improves soil conditions for acid loving plants.**

- Reduces the alkalinity of soil
- Improves the cultivation of acid loving plants
- Lime-hating plants including azaleas, ericas, rhododendrons and alpines will benefit from regular top dressing



Pack size	Packs in outer	Product code
1kg	6	6SI16
5kg (tub)	2	6SI5

Contains iron sulphate heptahydrate. Causes skin irritation. Harmful if swallowed. Causes serious eye irritation.



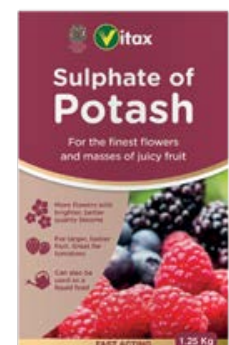
## Sulphate of Potash

**Boosts flowering and ripening of fruit.**

- Improves strength and vigour of plants
- Promotes increased fruit yields and bigger blooms
- Beneficial to tomatoes, cane fruit and blueberries
- Fast acting



Pack size	Packs in outer	Product code
1.25kg	6	6SP126
5kg (tub)	2	6SP5



## Superphosphate

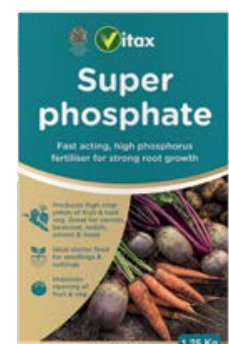
**Promotes strong root growth and healthy plants.**

- Produces high yields of fruit, root and seed crops
- Improves ripening of fruit
- Ideal starter feed for seedlings, rooted cuttings and transplants
- Fast acting



Pack size	Packs in outer	Product code
1.25kg	6	6SU126

Contains single superphosphate. Causes serious eye damage.



## Acer Japanese Maple Feed

For healthy growth and rich, vibrant foliage.

- For new or established plants
- Organic based – one feed lasts a whole season
- Packaged in weatherproof pouches, perfect to merchandise alongside plants for a linked sale

Pack size	Packs in outer	Product code
0.9kg (pouch)	6	6AF901

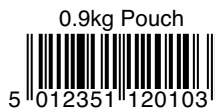


## Azalea, Rhododendron & Shrub Feed

For robust plants and vibrant flowers.

- Organic-based with added iron
- Helps prevent leaves yellowing
- Particularly suitable for use with acid loving plants
- Ideal for blueberries and raspberries
- Available in recyclable, weatherproof pouch

Pack size	Packs in outer	Product code
0.9kg (box)	6	6AZ906
0.9kg (pouch)	6	6AZ901



## Buxus Feed

For all Buxus species in hedges or containers.

- Promotes dense and healthy growth
- Contains nutrients to help improve leaf colour
- Provides extended nitrogen release
- Available in recyclable weatherproof pouch or tub

Pack size	Packs in outer	Product code
1kg (pouch)	6	6BF1
5kg (tub)	2	6BF5



## Clematis Fertiliser

Promotes growth and flowering of clematis and other climbers.

- Nutrient content is ideal for vigorous climbing plants including honeysuckle, passion flower and ivy
- Encourages bright, abundant flowering
- Rich in potassium and natural nutrients
- Available in recyclable, weatherproof pouch

Pack size	Packs in outer	Product code
0.9kg (box)	6	6CF900
0.9kg (pouch)	6	6CF901



# Fertilisers

## Conifer and Shrub Fertiliser

An extended release, pelleted fertiliser.

- Ideal for azaleas, rhododendrons and acid loving shrubs and plants
- Contains vital trace elements for early establishment and vigorous growth
- Extended release nitrogen

Pack size	Packs in outer	Product code
2.5kg	3	6CS23

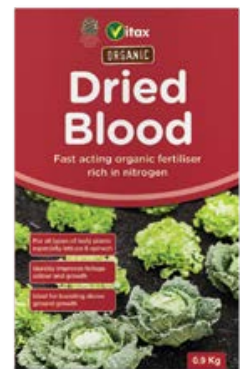


## Dried Blood

Fast acting organic fertiliser rich in nitrogen.

- Promotes above-the-ground growth
- Particularly beneficial to leafy crops such as lettuce, spinach and cabbage
- Also excellent for foliage plants

Pack size	Packs in outer	Product code
0.9kg	6	6DB96



## Hydrangea Feed

For vibrant flowers and strong healthy growth.

- Added magnesium and iron to boost flowering
- For abundant blooms of high quality flowers
- Improves plant health, quality and vitality
- Recyclable, weatherproof pouch

Pack size	Packs in outer	Product code
1kg (pouch)	6	6HF1



## Olive Tree Feed

An ideal boost of nutrients for any age or size of tree.

- Organic based fertiliser with added magnesium and trace elements for olive trees grown in pots or in the garden
- Provides extended release of organic nutrients for healthier plants with dense foliage
- Also boosts fruiting
- Use on any size of tree from young to old
- Recyclable, weatherproof pouch packaging

Pack size	Packs in outer	Product code
0.9kg (pouch)	6	6OT901





## Organic Potato & Vegetable Fertiliser

Carefully balanced organic nutrients for better crops of potatoes and vegetables.

- Promotes bumper potato harvests
- Also recommended for other vegetable crops
- Provides slow release of nutrients

Pack size	Packs in outer	Product code
1kg	6	6PF16
4.5kg	2	6PF45



## Organic Rose Food

Enriches soil to promote better blooms.

- Made from poultry manure enriched with potash
- Contains the three major plant foods required for rich green foliage and abundant blooms
- Available in recyclable, weatherproof pouch or tub for outdoor merchandising

Pack size	Packs in outer	Product code	Pack size	Packs in outer	Product code
0.9kg (box)	6	6ORF96	2.5kg (box)	3	6ORF253
0.9kg (pouch)	6	6ORF901	4.5kg (tub)	2	6ORF45



## Rose Food

For abundant blooms of brighter roses.

- Top quality rose fertiliser for abundant blooms
- Increases flowering and improves growth
- Contains three major plant foods
- With iron and magnesium to boost plant health

Pack size	Packs in outer	Product code
1.25kg	6	6RF126
2.5kg	3	6RF253



## Tree & Shrub Planting Feed

For the best possible start when planting trees and shrubs

- Contains Q4 Rootmore mycorrhizal fungi and a range of biostimulants for vigorous root growth
- Feeds through the first year
- Packaged in recyclable, weatherproof pouches, perfect to merchandise alongside plants for a linked sale

Pack size	Packs in outer	Product code
0.9kg (pouch)	6	6TPF901



# Liquid Fertilisers

## Acer Feed Liquid

For vibrant, healthy foliage and stronger growth.

- For Acers in borders, pots or containers
- Concentrated - makes up to 66 watering cans
- The perfect analysis for healthier plants with rich leaf colour and stronger roots.



Pack size	Packs in outer	Product code
1 litre	6	6ATLF1



## Buxus Feed Liquid

For sturdy growth and healthy green foliage.

- Tailored nutrient mix to boost plants grown in pots or in garden beds
- Plants grow stronger, more resilient to disease, pests and stress
- Apply every 7-14 days from spring to late summer



Pack size	Packs in outer	Product code
1 litre	6	6BFL1



## Ericaceous Feed

For Azaleas, Camellias and Rhododendrons.

- Helps all acid loving plants to thrive
- Boosts leaf colour
- With iron and manganese for strong healthy growth and flowering



Pack size	Packs in outer	Product code
1 litre	6	6EF1



## Fuchsia Feed

For strong, healthy growth and improved flowering.

- Suitable for fuchsias grown in tubs, planters and hanging baskets
- Can be used on all flowering plants around the garden
- High potash liquid feed with added trace elements



Pack size	Packs in outer	Product code
500ml	6	6FUF500



## Growmore Liquid

General purpose liquid fertiliser for use all around the garden.

- Specially formulated to encourage strong healthy growth
- Contains all three major plant nutrients
- Apply throughout the growing season

Pack size	Packs in outer	Product code
1 litre	6	6LG1



## Herb Feed

For bigger crops of tasty, home-grown herbs.

- The ideal mix of nutrients for superior growth
- A fast acting nutrient boost
- For herbs grown indoors or outdoors
- Enriched with seaweed

Pack size	Packs in outer	Product code
500ml	6	6LHF500



## Hydrangea Feed

For masses of vibrant flowers and strong, healthy growth.

- Tailored nutrient mix to boost plants grown in pots or in garden beds
- Plants grow stronger with abundant flowering
- Apply every 7-14 days from spring to late summer

Pack size	Packs in outer	Product code
1 litre	6	6HFL1



## Olive Tree Feed

Boosts growth in any age or size Olive tree.

- Perfect for trees grown in pots or borders
- For healthy trees with dense foliage
- Helps revive tired plants

Pack size	Packs in outer	Product code
1 litre	6	6OTLF1



# Liquid Fertilisers

## Organic All Purpose Plant Food

Contains all the concentrated organic growing power needed to bring gardens to life.

- Bursting with natural nutrients and trace elements
- For use all around the garden on flowers, fruit and vegetables
- Gentle on the environment
- Child, pet and bee friendly



Pack size	Packs in outer	Product code
1 litre	6	6ALP1



## Organic Rose Food

For healthy growth and brighter blooms.

- Contains natural plant extracts and mineral nutrients
- High potash feed with trace elements
- For roses, soft fruit and flowering plants
- Water-in or use as a foliar spray



Pack size	Packs in outer	Product code
1 litre	6	6LRF1



## Organic Seaweed

A completely natural product that works wonders all around the garden.

- All-purpose source of organic nutrients
- Bigger crops of tastier fruit and veg
- Healthier plants - more resilient to disease



Pack size	Packs in outer	Product code
500ml	6	6SW506
1 litre	6	6SW1
2 litre	4	6SW2



## Organic Strawberry Fertiliser

High potash feed containing naturally occurring nutrients and trace elements.

- Provides a steady supply of natural nutrients
- Promotes strong, healthy growth
- Apply from Spring for increased yields



Pack size	Packs in outer	Product code
1 litre	6	6SF1



## Organic Tomato Food

Provides all the quality nutrients needed in an approved organic fertiliser.

- Bursting with natural nutrients and trace elements
- For gardeners who want organic grow your own crops
- Gentle on the environment
- Child, pet and bee friendly



Pack size	Packs in outer	Product code
1 litre	6	6OLT1



## Q4 All Purpose Liquid

Vitax Q4 Liquid All Purpose Premium Plant Food is packed with organic nutrients to create bigger, brighter blooms and deliver bumper crops. This finest feed contains a unique formula which boosts rooting and optimises nutrient uptake.

- Contains seaweed, humates and trace elements
- Used around the garden for both indoor and outdoor plants



Pack size	Packs in outer	Product code
1 litre	6	6QFAP1



## Seaweed plus Sequestered Iron

A great tonic for lime hating plants.

- Helps develop healthy foliage
- Prevents yellowing of leaves
- Corrects iron deficiency in plants
- Apply throughout the growing season



Pack size	Packs in outer	Product code
500ml	6	6SWI506
1 litre	6	6SWI1



## Tomato Feed

High potash feed to promote bumper crops.

- Use on tomatoes grown indoors or outdoors
- Rich in nutrients for greater tasting tomatoes
- Apply from Spring right through the growing season



Pack size	Packs in outer	Product code
1 litre	6	6LT1
2 litre	4	6LT2



## Tree Fern and Palm Feed

A perfect balance of nutrients to maximize growth and maintain rich foliage colour.

- For tree ferns in pots or planted outdoors
- Also an ideal feed for palms, bamboo, grasses and other ferns
- Replicates the nutrients ferns obtain from decaying canopy vegetation found in their natural environment.



Pack size	Packs in outer	Product code
500ml	6	6TF500



## Tub & Hanging Basket Feed

The perfect way to keep hanging basket plants bright and healthy.

- Rich in nutrients for superior displays
- Helps blooms last longer
- Incorporates special wetters to improve penetration into the compost



Pack size	Packs in outer	Product code
1 litre	6	6HB1



# Soluble Fertilisers

## Q4 Premium Soluble Plant Food

The premium all purpose plant feed.

- The most complete feed available for the whole garden
- Revolutionary organic nutrient delivery system
- Fast results achieved

Pack size	Packs in outer	Product code
1kg	6	6QFSP1



## Sequestered Iron Plant Tonic

Corrects iron, magnesium and manganese deficiency.

- Supplies iron to correct yellowing leaves, poor growth and flowering
- For lime-haters such as rhododendrons and heathers

Pack size	Packs in outer	Product code
4 x 20g Sachets	12	6SQ120

- Improves colour and vigour of all flowering plants
- Applied in early spring, one application lasts all season



## Multipurpose Feed (Vitafeed 111)

A highly effective all-round feed for use throughout the garden.

- Contains equal proportions of nitrogen, potash and phosphate plus essential trace elements
- Promotes strong, healthy growth
- Suitable for seedlings and young plants

Pack size	Packs in outer	Product code
500g	6	6MP500



## Flower & Fruit Feed (Vitafeed 102) - High Potash

Formulated to promote a succession of beautiful blooms.

- Use throughout the garden to encourage flowering plants
- Ideal for hanging baskets, planters and tubs
- Will help ripen tomatoes and vegetables
- High Potash feed

Pack size	Packs in outer	Product code
500g	6	6HB500



## Vegetable & Leafy Plant Feed (Vitafeed 301) - High Nitrogen

The ideal fertiliser for all leafy plants.

- Promotes strong leaf growth on ornamental foliage plants, vegetables and herbs
- Can also be used very effectively on lawns
- High Nitrogen feed

Pack size	Packs in outer	Product code
500g	6	6FF500



# Specialist Soluble Plant Feeds



## Bonsai Soluble Feed

**For healthy growth and stronger roots.**

- Specially tailored soluble feed suitable for most bonsai species
- Strengthens stems and root systems

Pack size	Packs in outer	Product code
200g	12	6BF200



## Cacti & Succulent Soluble Feed

**For healthy growth in all cacti and most succulents.**

- Low nitrogen soluble fertiliser
- Ideal for all varieties of cacti and most succulents

Pack size	Packs in outer	Product code
200g	12	6CF200



## Citrus Summer Soluble Feed

**For strong healthy growth and improved fruiting.**

- High nitrogen content is ideal for citrus plants
- Discourages premature ripening, fruit drop and leaf discolouration

Pack size	Packs in outer	Product code
200g	12	6CFS200



## Citrus Winter Soluble Feed

**Maintenance feed for the Autumn/Winter months.**

- Carefully balanced to maintain growth
- Helps prevent premature leaf fall and discolouration

Pack size	Packs in outer	Product code
200g	12	6CFW200



## Orchid Feed Soluble Feed

**For healthy growth and improved flowering.**

- Traditional formulation orchid feed
- Supports healthy growth and counters 'nutrient lock-up'

Pack size	Packs in outer	Product code
200g	12	6OF200



# House plant Care

## House Plant Feed

General fertiliser suitable for most house plants.

- Traditional balanced liquid feed
- Contains added seaweed to boost health and vigour
- Promotes strong growth and flowering

Pack size	Packs in outer	Product code
300ml	12	6HPF300



## Leaf Shine

Brightens the leaves of house plants.

- For instant glossy foliage
- Long lasting shine
- No need to polish or dust

Pack size	Packs in outer	Product code
200ml	12	5HPLS200



## Orchid Bloom Feed

Encourages the development of beautiful flowers.

- Specially developed liquid feed
- Contains the ideal mix of nutrients
- Apply weekly when flowering

Pack size	Packs in outer	Product code
500ml	6	6OF500



## Orchid Drip Feed

Specially developed to meet the nutrient requirements of orchids.

- Liquid fertiliser is slowly released into the compost
- Convenient and easy-to-use
- Each mini-bottle feeds for 2-3 weeks

Pack size	Packs in outer	Product code
30ml x 10	20	6DFO1



## Orchid Growth Feed

Promotes healthy growth of orchids.

- Specially developed liquid feed
- Nutrients blended to promote root development and plant growth
- Apply weekly until flowering commences

Pack size	Packs in outer	Product code
500ml	6	6OG500





## Orchid Mist Spray

**Plant tonic and leaf conditioner.**

- With plant nutrients and seaweed extract
- For healthy growth and profuse flowering
- Boosts humidity around the orchid
- Use once or twice a week

Pack size	Packs in outer	Product code
300ml	12	6OM300



## Plant Pest Killer

**Controls pests that can damage or kill plants.**

- Supplied in a ready-to-use spray
- Controls greenfly and many other pests
- Treat plants at first sign of infestation

Pack size	Packs in outer	Product code
300ml	12	5HPK300

Contains: Cypermethrin



# Water Retaining Crystals

## Stay Wet

**Water absorbent crystals.**

- The crystals absorb and then release moisture
- Act as a reservoir for plant roots
- Ideal for use in hanging baskets and planters
- Mix with compost at planting time

Pack size	Packs in outer	Product code
200g	12	6SW200



## Stay Wet Plus

**Water absorbent crystals with controlled release fertiliser.**

- Retains and releases moisture
- Feeds for up to 4 months
- Ideal for hanging baskets and planters

Pack size	Packs in outer	Product code
200g	12	6SW201



# Composts

## Q4 Multi-purpose Compost

High quality, Irish peat-based compost.

- Enriched with Q4 Premium Plant Food for outstanding results
- Suitable for seed sowing, pricking out and potting on
- Ideal for hanging baskets, planters and tubs

Pack size	Packs in outer	Product code
20 litres	1	8MC20
56 litres	1	8MC56



## Q4 Multi-purpose Compost with John Innes

Premium grade compost.

- High quality, nutrient rich compost
- A reduced peat compost with added loam
- Enriched with Q4 Premium Plant Food feed for longer lasting nutrient release
- Excellent moisture retention
- Ideal for seed germination and rooting of cuttings
- Neutral pH

Pack size	Packs in outer	Product code
56 litres	1	8MCJ156



## Rose, Tree and Shrub Compost

A premium quality compost with added Q4 feed for strong roots and quick establishment.

Pack size	Packs in outer	Product code
56 litres	1	8MCR56

- Feeds for the first season
- Formulated for planting roses, trees and shrubs
- Contains Q4 feed - trusted and respected by professional growers



## Pots and Baskets Compost

A high quality peat based compost for all kinds of pots, baskets, planters and tubs.

Pack size	Packs in outer	Product code
56 litres	1	8MCPB56

- Contains Q4 feed - trusted and respected by professional growers. Feeds for up to 8 weeks.
- Added water retaining agent reduces the need for watering
- Specifically developed to give abundant growth of bright blooms



## Ericaceous Compost

For plants that thrive in acidic conditions.

Pack size	Packs in outer	Product code
56 litres	1	8MEC56

- Ideal for lime hating plants
- Perfect for Azaleas, Rhododendrons, Camellias, Magnolias and Heathers
- Contains Q4 feed
- For containers and for planting out ericaceous plants



# Soil & Compost Additives

## Vermiculite

Highly absorbent lightweight compost additive.

- Use on its own or mix 50/50 with compost for seed germination
- Use for pricking out and potting on
- Use in larger pots and containers to reduce overall weight and improve water retention

Pack size	Packs in outer	Product code
10 litres	1	6VMV10
20 litres	1	6VMV20



## Perlite

Micro-porous granules.

- Use alone for seed germination
- Mix with compost to improve water and nutrient holding capacity
- Mix with soil when planting out to help hold water and nutrients close to the root system

Pack size	Packs in outer	Product code
10 litres	1	6VMP10
20 litres	1	6VMP20



## Hydroleca

Water-holding clay pebbles.

- Honeycomb cores absorb and release water
- Ideal as an attractive mulch on any indoor or outdoor potted plant
- Creates a micro-climate around pots and greenhouse benches

Pack size	Packs in outer	Product code
10 litres	1	6VMH10



## Clay Breaker

**Breaks up the heaviest clay, making soil easier to work.**

- Improves drainage and enhances soil warmth to encourage earlier cropping
- Will not damage soil pH
- Can also be used as an Autumn top dressing on lawns

Pack size	Packs in outer	Product code
2.5kg	3	6CB23
10kg	1	6CB10



## Calcified Seaweed

**Natural soil and lawn conditioner.**

- Breaks down heavy soils and improves soil structure
- Promotes stronger root systems and vigorous plant growth
- Long lasting, apply once every three years

Pack size	Packs in outer	Product code
2.5kg	3	6CAS23



## Compost Maker

**The economical way to make rich, dark compost.**

- Specially formulated compost accelerator
- Speeds up the breakdown of organic garden and kitchen waste
- Use to recycle grass cuttings, leaves, egg shells etc.

Pack size	Packs in outer	Product code
2.5kg	3	6CM23
10kg	1	6CM10



## Garden Lime

**A soil conditioner to sweeten and improve the drainage of heavy clay soils.**

- Neutralises acid soils
- Enables beneficial soil bacteria to flourish
- Helps suppress club root in brassicas

Pack size	Packs in outer	Product code
3kg Granular	3	6GL33
10kg Granular	1	6GL10
20kg Powder	1	6GL20



# Grits and Sands

## Gravel

### Lime-free washed gravel.

- Makes excellent drainage and top dressing in pots
- Great for water features
- Use for paths, drives and rock gardens



Pack size	Packs in outer	Product code
Small	1	6VNG5
Large	1	6VNG1



## Coarse Grit

### Horticultural grade grit.

- Lime-free washed coarse grit
- Decorative top-dressing for pots
- Ideal around cacti and alpins



Pack size	Packs in outer	Product code
Large	1	6VNCG1



## Horticultural Potting Grit

### Lime-free washed grit.

- For cacti, succulents and alpins
- Provides extra drainage when added to compost
- Aids drainage when dug into heavy soil



Pack size	Packs in outer	Product code
Small	1	6VNPG5
Large	1	6VNPG1



## Silver Sand

### Lime-free horticultural grade sand.

- Mix with peat to make compost for cuttings
- Improves aeration
- Ideal for top dressing lawns



Pack size	Packs in outer	Product code
Small	1	6VNSLS5
Large	1	6VNSLS1



## Sharp Sand

### Horticultural grade washed sand.

- Lime-free coarse sand
- Improves drainage in seed and cutting compost
- For use when laying paving and patio slabs



Pack size	Packs in outer	Product code
Small	1	6VNSS5
Large	1	6VNSS1



## Play Sand

### Play Sand.

- Great for outdoor fun in sand pits and sand tables.
- A fine specially selected sand ideal for sand and water trays
- Non-staining
- Can be used wet or dry



Pack size	Packs in outer	Product code
Large	1	6VNPS1



## Greenhouse Fumigator

**Insecticide smoke for greenhouses.**

- Treats a standard 8ft x 6ft greenhouse
- Kills flying and crawling insects
- Does not leave an odour or visible deposits

Pack size	Packs in outer	Product code
3.5g	12	5GHF35

Contains: Permethrin



## Summer Cloud Greenhouse Cleaner

**A fast and easy way to remove algae and mould.**

- Cleans greenhouses and conservatories
- Covers approximately 6m<sup>2</sup>
- Also removes greenhouse sunshading

Pack size	Packs in outer	Product code
750ml	12	5GHC750



## Summer Cloud Greenhouse Shading

**Easy-to-apply protection from summer sun.**

- Apply to external glass surfaces with a sprayer or paint brush
- Stays on in wind and rain
- Wipes off with a duster, or use Summer Cloud Greenhouse Cleaner

Pack size	Packs in outer	Product code
500ml	6	5GHS500



## Greenhouse Disinfectant

**A concentrated cleaner and disinfectant.**

- For use on glass, work surfaces and equipment such as knives and tools
- Use in greenhouses, garages, utility rooms and outbuildings
- Cleans ornamental pots and disinfects bird tables

Pack size	Packs in outer	Product code
500ml	6	5GHD500



# Enthusiast Range

## Copper Mixture

**Prevents nutrient deficiency.**

- For use on fruit and edible crops
- Protects plants from copper, manganese and zinc deficiency
- Simply mix with water for use as a leaf spray
- Use during periods of active growth



Pack size	Packs in outer	Product code
175g	12	5CM175

Contains: Copper oxychloride, zinc oxide and manganese sulphate. Causes serious eye damage. Toxic to aquatic life with long lasting effects.



## Hydrangea Colourant

**Changes pink hydrangeas to blue.**

- Pale pink varieties tend to turn blue best
- Darker pink varieties turn to mauve/blue
- Use weekly during the growing season



Pack size	Packs in outer	Product code
250g	12	5HC250
500g	12	5HC500

Contains: Iron sulphate and aluminium sulphate. Causes skin irritation. Causes serious eye damage.



## Organic Rooting Gel

**Boosts rooting and establishment of cuttings.**

- Made from natural plant extracts to help rooting and establish cuttings
- Helps retain moisture during the vital early stage after taking the cutting
- Suitable for soft, semi-hard or hardwood cuttings



Pack size	Packs in outer	Product code
150ml	6	5ORG150



## Organic Rooting Powder

**The ideal way to start rooted cuttings.**

- Organic rooting fertiliser that stimulates root development
- Suitable for edible and ornamental plants
- Use with soft, medium and hardwood cuttings



Pack size	Packs in outer	Product code
50g	12	5RP50



## Yellow Sulphur

**For sulphur deficient soils.**

- Plant nutrient and soil acidifier
- Helps prevent yellowing of leaves
- For strong healthy growth to reduce susceptibility to powdery mildew and black spot
- Can also be used as a soil conditioner for acid loving plants



Pack size	Packs in outer	Product code
225g	12	5YS225

Contains: Sulphur. Causes skin irritation.





## Box Tree Moth Trap / Refill Pack

Helps protect buxus from attack

- Will not harm beneficial insects
- Pesticide-free and non-hazardous
- Helps monitor and control by attracting and trapping male moths

Pack size	Packs in outer	Product code
1 trap	4	5BTMT1
Refill pack	6	5BTMTR2



## Tree Bands

Efficient way to protect fruit trees from crawling insects.

- Pesticide-free and non-hazardous
- Bands are treated with a non-drying adhesive which effectively traps pests
- Ideal for organic gardening

Pack size	Packs in outer	Product code
2 X 1.75m	12	5GB1



## Apple Maggot Monitoring Trap / Refill Pack

Single trap will protect 3 to 5 trees from apple fruit moths.

- Strong corrugated trap with hanger
- Contains one pheromone lure
- Separate refill pack also available containing one lure

Pack size	Packs in outer	Product code
1 trap plus fitments	8	5AM1
Refill pack	12	5AMR1



## Plum Maggot Monitoring Trap / Refill Pack

Single trap will protect 3 to 5 trees from plum fruit moths.

- Strong corrugated trap with hanger
- Contains one pheromone lure
- Separate refill pack also available containing one lure

Pack size	Packs in outer	Product code
1 trap plus fitments	8	5PM1
Refill pack	12	5PMR1



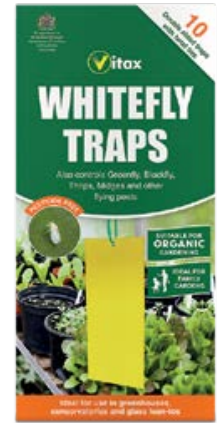
# Enthusiast Range

## Whitefly Traps

**A great way to reduce whitefly and other flying pest populations in the greenhouse.**

- Coated both sides with dry-touch insect glue
- Pesticide-free and suitable for organic gardening
- Non-toxic

Pack size	Packs in outer	Product code
10 traps with hangers	12	5WFT1



## Winter Tree Wash

**A completely natural, organic product – gives plants a clean start.**

- Removes insect debris, dust and wax which insects use to secure their eggs on plants
- Clears the plant of eggs, larvae and nymphs of aphids and insects
- Works by purely physical means

Pack size	Packs in outer	Product code
500ml	6	5WTW1



## Fruit Tree Grease

**Monitoring trap for winter moths on fruit trees.**

- Easy to use, simply brush-on
- Prevents wingless female moths climbing trees to lay eggs
- Apply in Autumn (September/October) and renew in February

Pack size	Packs in outer	Product code
200g	12	5TG200



## Medo Prune and Seal

**Ready to use pruning compound and grafting sealant.**

- Protects wounds caused by pruning or accidental damage
- Forms an elastic, waterproof skin over wounds
- Prevents fungal and bacterial parasites from invading wounds

Pack size	Packs in outer	Product code
200g	12	5ME200



## Mulch Mats

For strawberries, lettuces and newly planted shrubs and roses.

- Keeps plants clean and helps prevent mould
- Suppresses weeds and helps retain moisture
- Biodegradable



Pack size	Packs in outer	Product code
10 Mats	12	6MM1



## Cabbage Collars

Protects cabbages and brassicas from Cabbage Root Fly.

- Simple, efficient and non-chemical
- Prevents the adult fly from laying eggs near base of plant
- Biodegradable



Pack size	Packs in outer	Product code
30 Collars	12	6CC1



## Grow Pots

The ideal start for seeds and young plants.

- Keeps roots warm and moist for vigorous growth
- Protects roots from transplant damage
- Plant out the complete pot
- Biodegradable



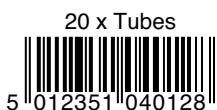
Pack size	Packs in outer	Product code
8cm Round Pots x 16	12	6VGP1
9cm Round Pots x 12	12	6VGP2
9cm Square Pots x 12	12	6VGP3



## Grow Tubes

The ideal start for seeds and young plants.

- For tap-rooted plants such as beans, leeks, carrots and sweet peas
- Keeps roots warm and moist for vigorous growth
- Protects roots from transplant damage
- Biodegradable



Pack size	Packs in outer	Product code
Tubes x 20	12	6GT1



## Grow Pot for Ring Culture

For tomatoes, cucumbers, peppers, melons and chrysanthemums and other heavy feeding plants.

- One set of roots grows within the pot to take up plant food
- Another set of roots penetrates below the pot to access water



Pack size	Packs in outer	Product code
6 Pots	6	6RCP1



# Lawn Care

## Vitax Organic Lawn Feed

A plant-based, chemical-free lawn feed, the ideal choice for busy family gardens.

- For a greener, thicker more durable lawn
- Child and pet friendly, no delay to play
- Treats up to 100m<sup>2</sup>

Pack size	Packs in outer	Product code
100m <sup>2</sup>	6	5OLL1



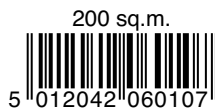
## Vitax Feed & Weed

Liquid lawn fertiliser with added weedkiller to treat common lawn weeds.

- For green and healthy lawns
- Kills common lawn weeds and encourages grass regrowth
- Apply from April to September

Pack size	Packs in outer	Product code
100m <sup>2</sup>	6	5FW500
200m <sup>2</sup>	6	5FW1

Contains: Clopyralid, 2,4-D and MCPA.



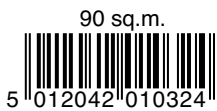
## Vitax All In One Feed Weed & Moss Killer

Complete lawn care - feeds, kills weeds and moss.

- Controls common lawn weeds
- Eradicates moss in lawns
- Feeds the lawn for richer, greener growth

Pack size	Packs in outer	Product code
90m <sup>2</sup> box	3	5FWM256
300m <sup>2</sup> tub	1	5FWM96
625m <sup>2</sup> bag	1	5FWM20

Contains: 2,4-D, mecoprop-p, dicamba and ferrous sulphate.



## Vitax Moss Remover

For a high quality lawn without the backache.

- Removes moss without scorching or blackening
- Dead moss is turned into lawn feed by beneficial bacteria meaning there is no need to rake
- Feeds the lawn for up to 3 months for greener, healthier grass

Pack size	Packs in outer	Product code
100m <sup>2</sup>	2	5MRN5



## Vitax Lawn Sand

### Traditional treatment for moss in lawns.

- Spring and Summer moss control
- Also acts as a tonic, giving lawns a rich green colour

Pack size	Packs in outer	Product code
50m <sup>2</sup>	3	5LS50
156m <sup>2</sup> tub	1	5LS156
250m <sup>2</sup> bag	1	5LS250

Contains: Ferrous sulphate

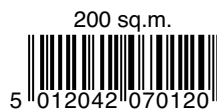


## Green Up Enhance Liquid Lawn Feed

### Unique ONDS technology for more efficient uptake of nutrients.

- As used by professional greenkeepers
- Can be used on freshly germinated and newly established lawns
- Can be used in wet or dry conditions

Pack size	Packs in outer	Product code
200m <sup>2</sup>	6	5GEL3



## Vitax Lawn Clear

### Kills the weeds other weedkillers leave behind.

- Controls buttercups, clover, dandelions and daisies
- Kills the weeds, not the grass
- Concentrated for larger lawns
- Fast acting systemic action
- Kills even deep roots

Pack size	Packs in outer	Product code
250ml	6	5LC256

Contains: Clopyralid, 2,4-D and MCPA



## Vitax Lawn Clear RTU

### Ideal for spot treatment of lawn weeds.

- For broad spectrum weed control
- Does not harm grass
- Fast acting systemic action

Pack size	Packs in outer	Product code
750ml	12	5LCRTU
4 litres	2	5LCRTU4

Contains: Clopyralid, 2,4-D and MCPA



# Weed Control

## SBK Brushwood Killer

Tough weedkiller which kills the roots to prevent regrowth. For nettles, docks and brambles.

- Targets weeds not grass
- Unique Triclopyr formulation - Glyphosate free
- Apply to tough weeds and hardwood saplings from May to October
- Use on woody weeds from June to August

Pack size	Packs in outer	Product code
125ml	12	5BKA125
250ml	12	5BKA250
500ml	6	5BKA500
1 litre	4	5BKA1

Contains: Triclopyr

**NO GLYPHOSATE**



## SBK Brushwood Killer RTU

Powerful weedkiller in a ready-to-use spray.

- Kills the weeds right down to the roots
- Unique Triclopyr formulation
- Fast & convenient to use
- All the benefits of SBK without any mixing

Pack size	Packs in outer	Product code
1 litre	6	5BKARTU1
4 litres	2	5BKAPRTU

Contains: Triclopyr

**NO GLYPHOSATE**



## SBK Tree Stump Killer

The trusted tough weedkiller now available as a dedicated Tree Stump Killer.

- Kills the roots to prevent regrowth
- Unique Triclopyr formulation
- Treats up to 8 stumps
- Controls tree stumps, woody weeds and hardwood saplings in grassland and non-crop areas.

Pack size	Packs in outer	Product code
250ml	6	5BKTS250

Contains: Triclopyr

**NO GLYPHOSATE**



# Slug and Snail Control



## Slug Gone

A natural, organic way to keep slugs and snails away from plants, derived from British wool.

- Simply lay the pellets on growing media around the stems of plants and wet
- Minute fibres in the mat are an irritant to slugs and also absorbs moisture from the slug's foot
- Biodegradable, contains naturally occurring slow release nutrients to help feed plants.
- Improves moisture retention
- Helps protect against cabbage root fly

Pack size	Packs in outer	Product code
1 litre	12	5SLG1
3.5 litres	6	5SLG35
5 litres	1	5SLG5
10 litres	1	5SLG10



## Slug Rid

Ready to use pelleted bait suitable for organic gardening.

- Approved for use around edible and ornamental plants
- Fast acting – slugs cease to feed immediately after consuming
- They move away from plants without leaving an unsightly trace

Pack size	Packs in outer	Product code
300g	12	5SR300
500g	12	5SR500

Contains: Ferric phosphate



## Copper Slug Tape

Popular, traditional method of deterring slugs and snails.

- Adhesive copper tape barrier
- Emits a tiny electrical charge when touched by slugs or snails causing them to turn away
- Excellent for use on pots, planters and greenhouse staging



## Slug Trap

Traditional re-usable traps which are easy to set.

- Contains two, easy-to-set, reusable traps
- Simple, effective and discreet
- Suitable for organic gardens



Pack size	Packs in outer	Product code
4m tape	12 (box)	5CS1
4m tape	12 (clip strip)	5CS1CS

Pack size	Packs in outer	Product code
2 traps	6	5SLGT2

# Pest Control

## Organic Rose Guard - Ready To Use

The ideal way to keep roses looking perfect, with protection from bugs and disease whilst being made from entirely natural ingredients.

Pack size	Packs in outer	Product code
750ml	12	5RGRTU

- Removes pests, fungal spores, dust, dirt and wax from roses, preventing insects securing their eggs on them
- Bee friendly
- Forms a film coating to strengthen plants' defences against disease
- Spray once a month for ongoing protection



## Plant Guard Organic Concentrate

For flowers, fruit and vegetables. No harvest interval required.

Pack size	Packs in outer	Product code
250ml	6	5PG256

- Removes pests, fungal spores, dust, dirt and wax from plants, preventing insects securing their eggs on them
- Bee friendly
- Forms a film coating to strengthen plants' defences against disease



## Plant Guard Organic Ready To Use

For flowers, fruit and vegetables. No harvest interval required.

Pack size	Packs in outer	Product code
750ml	12	5PG750

- Removes pests, fungal spores, dust, dirt and wax from plants, preventing insects securing their eggs on them
- Bee friendly
- Forms a film coating to strengthen plants' defences against disease



## Rose Guard Rose Tonic

A concentrated rose tonic for perfect roses.

Pack size	Packs in outer	Product code
500ml	6	5RGRT500

- Potassium Phosphite provides fast uptake of essential nutrients for strong healthy growth
- Contains the trace element copper; a natural enemy of disease
- Treats up to 40 plants





## PY Bug Killer Spray RTU

**Highly-effective, easy to use insect killer.**

- For use on edible and ornamental plants
- Controls greenfly, blackfly, caterpillars and other pests
- Use in the greenhouse or garden

Pack size	Packs in outer	Product code
750ml	12	5PY750

Contains: Cypermethrin



## PY Bug Killer Concentrate

**Concentrated insect killer.**

- For use on edible and ornamental plants
- Controls aphids, caterpillars, flea beetles and other pests
- 7 day harvest interval

Pack size	Packs in outer	Product code
250ml	6	5CO256

Contains: Cypermethrin



## PY Powder

**Insect killer in 'dust-on' powder form.**

- Based on Pyrethrum, nature's own insecticide
- Rapid knock-down of flying and crawling insects in the house & garden
- Kills fleas on pet bedding
- Easy to use dust-able formulation

Pack size	Packs in outer	Product code
175g	12	5PO1

Contains: Pyrethrins



# Exterior Care Products

## Path and Patio Cleaner

**Powerful cleaner for hard surfaces.**

- Can be used to clean asphalt, stone and concrete
- Also useful for removing stains from walls
- Removes moss, lichen and algae

Pack size	Packs in outer	Product code
2 litres	4	5PC2



# Animal Repellents and Training Aids

## Stay Off Fox Deterrent

A humane way to deter foxes from gardens, lawns, bins and patios

- Helps deter foxes from fouling in treated areas
- Use to avoid fox damage to plants and lawns from scratching and digging
- Humane - No harm to wildlife or plants
- Easy to apply spray

Pack size	Packs in outer	Product code
750ml	12	5SOF750

Contains: Aluminium ammonium sulphate



## Stay Off Mole Repellent

A natural, humane product to protect from moles tunnelling and producing molehills.

- Stimulates a fear based response which encourages moles to go elsewhere
- The odour is unpleasant to the animal, but not to humans
- Repels moles without harming them or other wildlife
- Children and pets may be allowed onto treated areas

Pack size	Packs in outer	Product code
500g	6	5SOMR506



## Stay Off Rabbit Repellent

A natural way to protect lawns from rabbit damage.

- Stimulates a fear based response which encourages rabbits to go elsewhere
- The odour is unpleasant to the animal, but not to humans
- Contains nitrogen which boosts plant growth and improves turf colour
- Easy to use, simply create a band around the area to be protected
- One band will protect for 6-8 weeks

Pack size	Packs in outer	Product code
500g	6	5SORR506

- Children and pets may be allowed onto treated areas



## Stay Off Scatter Pellets

Longer lasting weather proof pellets for a garden free from fouling.

- Scatter pellets to mask animal scents and break fouling habit
- Ideal for various pets to go elsewhere
- Use as a training aid to mask odours for up to four weeks
- Can be used in children's play areas

Pack size	Packs in outer	Product code
55g	12	5SO2
165g	12	5SO26



## Stay Off Scatter Gel

**A ready-to-use gel for a garden free from fouling.**

- Releases a strong, perfumed odour to confuse animals' sense of smell
- Ideal as a training aid to make various pets go elsewhere
- Use every 5-7 days until fouling habit is broken

Pack size	Packs in outer	Product code
450g	6	5SG456



## Stay Off Scatter Granules

**For a garden free from fouling.**

- Strong perfumed odour masks scents from previous fouling
- When used as a training aid helps keep lawns, beds and borders free from fouling
- Can be used in children's play areas

Pack size	Packs in outer	Product code
225g	12	5SO225
600g	6	5SO606



## Stay Off RTU

**Effective animal repellent spray.**

- Lightly spray on garden areas and plants to be protected
- Can be used around edible and non-edible crops
- Effective against a wide range of animals including cats, dogs, rabbits and birds

Pack size	Packs in outer	Product code
750ml	12	5ST750

Contains: Aluminium ammonium sulphate



## Stay Off Ultrasonic Animal Deterrent

**Banish cats, dogs and foxes from the garden.**

- Solar powered with rechargeable batteries
- Dual action strobe light and ultrasonic blast
- Infrared motion activated

Pack size	Packs in outer	Product code
1	4	5STU2



## Pepper Dust

**The traditional way to deter cats and dogs.**

- Full strength formulation
- Can be used on seed beds and around recent plantings
- Ideal for protecting paths, drives, patios and dustbin areas

Pack size	Packs in outer	Product code
225g	12	5PD1



# Ant & Crawling Insect Control

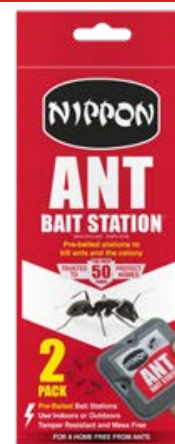
## Nippon Ant Bait Station

Pre-baited for quick, clean and easy use.

- Acts to kill ant colonies
- Clean and easy to use
- Use in and around the home

Pack size	Packs in outer	Product code
Twin	12	5NAB2

Contains: Spinosad



## Nippon Ant Killer System

Clean and effective way to get rid of ants.

- Pack contains 2 refillable bait stations and 25g Nippon Ant Killer Liquid
- Lay bait stations on ant trails or close to ant activity
- Eliminates ant colonies

Pack size	Packs in outer	Product code
2 traps + 25g	12	5NI50

Contains: Spinosad



## Nippon Ant Killer Liquid

Controls common black ants in and around the home.

- Designed so that worker ants carry the bait back to the nest to feed the whole colony
- Destroys ant colonies without trace
- Particularly useful where the nest site is unknown or inaccessible

Pack size	Packs in outer	Product code
25g	30	5NI33

Contains: Spinosad



## Nippon Ant Killer Powder

Highly effective control of common black ants and crawling insects.

- Use indoors and outdoors, kills on contact
- Simply puff powder along ant trails and along cracks, skirting etc.
- Long lasting - up to six months control

Pack size	Packs in outer	Product code
150g	12	5NI152
300g	12	5NI300
500g	12	5NI500

Nippon Ant Killer Powder contains: Permethrin  
Nippon Fast Acting Ant Killer Powder contains: Deltamethrin



## Nippon Ant & Crawling Insect Killer Aerosol

Ready to use in a convenient aerosol spray.

- Controls ants and other crawling insects
- Use as a topical treatment direct to the pest
- Spray on surfaces for long lasting residual treatment
- Fast acting with rapid effect on contact

Pack size	Packs in outer	Product code
300ml	6	5NIA306

Contains: Permethrin and Tetramethrin



## Nippon Ant & Insect Killer Spray

Controls ants, cockroaches, fleas, bed bugs and other crawling insects.

- Fast effect - kills on contact
- Use as topical or residual treatment
- Can be used in food preparation and storage areas

Pack size	Packs in outer	Product code
750ml	12	5NI750

Contains: Deltamethrin



## Nippon Pest Smoke

An effective smoke generator to eradicate a wide range of insects.

- Kills bedbugs, fleas, cockroaches, weevils and flying insects
- Odourless and easy to use
- Simply treat and leave for at least 2 hours

Pack size	Packs in outer	Product code
2 x 3.5g	12	5NPS1

Contains: Permethrin



## Nippon Woodlice Killer

Highly efficient control of woodlice and other pests.

- Use on woodlice, wasps, cockroaches, earwigs, silver fish and other crawling insects
- Long lasting - up to 6 months control
- Children and pets need not be excluded from treated areas

Pack size	Packs in outer	Product code
150g	12	5WL150

Contains: Permethrin



# Insect Control

## Nippon Total Insect Killer

Powerful flying and crawling insect control.

- Kills both flying and crawling insects
- An efficient contact and residual insecticide
- Use anywhere in the home

Pack size	Packs in outer	Product code
300ml	6	5NTI306

Contains: Permethrin and Tetramethrin



## Nippon Fly and Wasp Aerosol

Fast acting control in a handy aerosol spray.

- Effective against flies, wasps, mosquitoes, midges and other flying insects
- Use anywhere in the home
- Immediate effect on contact

Pack size	Packs in outer	Product code
300ml	6	5NFW306

Contains: Permethrin and Tetramethrin



## Nippon Fly Paper

A traditional method of trapping flies in the home.

- Pesticide free
- Simply untwist and hang up
- Traps flies on contact
- Ideal for the home and greenhouse
- Attractive floral design

Pack size	Packs in outer	Product code
3	12	5NFWP3



## Nippon Clothes Moth Spray

Helps prevent moth damage.

- Designed to be used inside wardrobes etc.
- Controls clothes moths, carpet moths, fleas and other household pests
- Protects clothing from unsightly damage
- Low odour formulation

Pack size	Packs in outer	Product code
300ml	12	5NCMRTU

Contains: Cypermethrin



## Nippon Clothes Moth Trap

Helps keep woollens and other fabrics safe.

- Discreet, practical and pesticide-free
- Designed to be used inside wardrobes etc.
- Pheromone attracts and traps male moths to prevent breeding
- Lasts for up to 3 months

Pack size	Packs in outer	Product code
2	12	5NCMT1



## Nippon Wasp Nest Powder

Provides rapid and effective control of nests.

- Apply the dust liberally into the nest or apply in piles at the nest entrance
- Follow pack instructions carefully and do not disturb the colony
- Can be used on nests indoors and outdoors

Pack size	Packs in outer	Product code
300g	12	5NWP300

Contains: Permethrin



## Nippon Wasp Nest Destroyer Foam

Powerful spray aerosol that will destroy a wasp nest from a distance of up to 3 metres.

- Spray foams up instantly to thoroughly wet the treated nest
- Fast acting with rapid effect on contact
- Use indoors and outdoors

Pack size	Packs in outer	Product code
300ml	6	5NWN306

Contains: Permethrin and Tetramethrin



## Nippon Wasp Trap

Wasp trap and specially formulated wasp bait.

- Hang traps from trees, trellises etc. to create wasp-free zones around the garden
- Safe to use around children & pets
- Each trap remains effective for up to 3 months

Pack size	Packs in outer	Product code
1	8	5NWTB1



## Nippon Fly Trap Window Stickers

A simple and effective way to get rid of flying pests.

- Ideal for kitchens, bathrooms, conservatories etc.
- Easily removed and replaced
- Each trap remains effective for up to 3 months
- Odourless

Pack size	Packs in outer	Product code
4	20	5WFS1



# Rodent Control

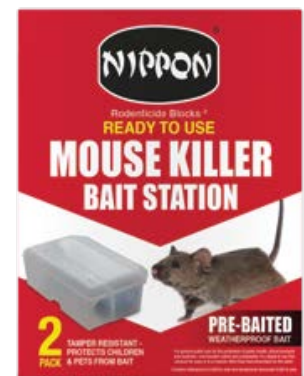
## Nippon Ready To Use Mouse Killer Bait Station

The highly effective way to control mice without the need to touch bait.

- Tamper resistant - protects children & pets from bait
- Use indoors or outdoors
- Bait stations can be refilled for future use

Pack size	Packs in outer	Product code
2 pack	6	5NMBRTU

Contains: Difenacoum



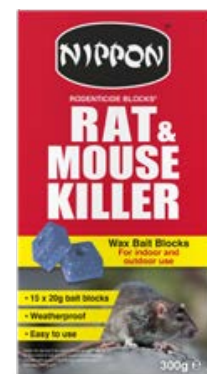
## Nippon Rodenticide Blocks

Wax blocks.

- Ideal for indoor and outdoor use
- Highly effective, all weather wax blocks
- Use where there are signs of rodent activity, such as fresh droppings

Pack size	Packs in outer	Product code
300g	6	5NRWB300

Contains: Difenacoum



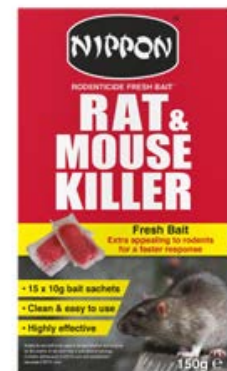
## Nippon Rodenticide Fresh Bait

Fresh bait sachets.

- Fresh bait is irresistible to rodents
- Ideal for indoor use
- Use where there are signs of rodent activity, such as fresh droppings

Pack size	Packs in outer	Product code
150g	6	5NRFB150

Contains: Difenacoum



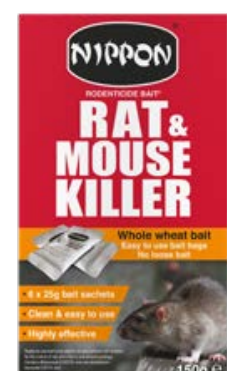
## Nippon Rodenticide Bait

Whole wheat sachets.

- Easy to use
- No loose bait
- Highly effective
- Use unopened in tamper resistant bait stations

Pack size	Packs in outer	Product code
150g	6	5NRWW150

Contains: Difenacoum





## Nippon Rat Bait Station

Easy-to-use and effective.

- Clear lid allows contents to be checked at a glance
- Effective indoors and outdoors
- Tamper resistant
- Bait available separately

Pack size	Packs in outer	Product code
1	6	5NRB1



## Nippon Pre-Baited Mouse Trap in a Box

Enclosed mouse trap.

- Trap is enclosed in a lockable station
- Easy to set pre-baited trap
- Keeps dead mice from sight
- Safe to use around children and pets

Pack size	Packs in outer	Product code
1 trap	6	5NMTB1



## Nippon Tip Trap

Live capture mouse trap.

- Allows capture and release without harming the mouse
- Safe, simple and effective
- Can be used again and again

Pack size	Packs in outer	Product code
1 trap	6	5NMTH1



# Displays and Point of Sale

## Display Pallet

Product	Pack Size	Qty per pallet	Product code
All In One Feed Weed & Moss Killer	90m <sup>2</sup>	75	5QPFM75
Blood Fish & Bone	2.5kg	75	6QPFB75
Bonemeal	2.5kg	75	6QPBM75
Compost Maker	2.5kg	75	6QPCM75
Feed & Weed	1 litre	112	5QPFW1
Growmore	2.5kg	75	6QPGR75
Nippon Ant Killer Powder	300g	168	5QPNI300
Nippon Ready To Use Spray	750ml	90	5QPNIRTU
Organic All Purpose Liquid Feed	1 litre	90	6QPAmlP90
Organic Seaweed	1 litre	90	6QPSW90
Perlite	10 litres	24	6QPP10
Potato Feed	1kg	108	6QPFF1
Q4	2.5kg	75	6QPQF75
Q4 All Purpose Liquid Feed	1 litre	90	6QPQFAP90
Slug Gone	3.5 litres	48	5QPSL35
Slug Rid	500g	90	5QPSR500
Stay Off Granules	600g	90	5QPSO600
Tomato Food	1 litre	90	6QPLT90
Vermiculite	10 litres	24	6QPV10



## Free Standing Display Units (FSDU)



Nippon Ant Killer FSDU		Nippon Rodenticides FSDU		SBK FSDU	
Product	Pack Size	Product	Pack Size	Product	Pack Size
Nippon Ant Bait Station	2 pack	Nippon Ready To Use Mouse Bait Station	2 pack	SBK Concentrate	250ml
Nippon Powder 33% FREE	400g	Nippon Rodenticide Wax Blocks	300g	SBK Concentrate	500ml
Nippon RTU Spray	750ml	Nippon Rodenticide Fresh Bait	150g	SBK Tree Stump Killer Concentrate	250ml
		Nippon Rodenticide Whole Wheat Bait	150g	SBK Ready To Use	1 Litre
		Nippon Rat Bait Station	1		

## Hanging Display Baskets and Free Standing Crates for plant areas

Ideal for use with our specialist feed range to maximise linked sale opportunities.

